

# POWICK PARISH NEWS



Spring 2025



**Powick Parish Council**



# Comments from the Chair

## Happy New Year from your Parish Council

May I take this opportunity to wish all parishioners a very Happy New Year from all your Parish Councillors and assure you that we will continue to do our utmost to work constructively with you to ensure that our village communities maintain their unique character, whilst trying to embrace new ventures designed to enrich our lives, both socially and economically.

New attitudes to planning regulation will inevitably bring additional pressures on our landscape, and we will need to be extremely careful in balancing the need for future housing with the provision of local infrastructure such as improved public transport, retail opportunities, health care and education.

You will see elsewhere in this newsletter the hard work carried out by Councillor Maggie Huckfield and our team in producing the Neighbourhood Development Plan. You will see from the timetable for its production, that each individual parishioner will be asked to comment on this plan and we are bound to take your feedback into account. I urge you to read this section carefully so you are ready to respond when the time comes.



CHAIR - ANDY LAMB

### In this newsletter:

---

Community Updates

---

Powick Neighbourhood Plan

---

The Pavilion

---

Callow End Playing Fields

---

Safer Neighbourhood Partnership

---

# Comments from the Chair

January is the time when we have to set our budgeting forecast for the coming financial year and, in attempting to ensure we have all bases covered, we have had to recognise that, like all of you, our costs are rising. To this end, we have had to increase the allocated amounts for several significant budget headings. The most expensive of these cover the cost of street lighting. Over the years we pioneered a successful working partnership with the County Council, enabling us to effectively combine both provision and maintenance of lighting stock across the parish. However, due to the age and condition of many of our lighting columns, safety concerns require us to upgrade the majority of those columns during the next twelve months, so we felt that we should go ahead with an appropriate replacement programme throughout 2025/6.

Additionally, the pavilion facility at Callow End Playing Fields is in need of some significant upgrading and the Parish Council felt it appropriate to support the efforts of the Playing Field Association members in making improvements for the benefit of the community.

Having identified these priorities for the next year, Councillors agreed that we will need to raise the precept required from the parish by 5%. This may seem high, but will still represent an increase of only around 4p per week per household across the parish, so we think this reflects value for money

The continuing improvements at the Hospital Lane site in Powick are already budgeted for and we shall create a mini pump/cycle track there during the Spring.

We still have vacancies on the Parish Council, so if you feel you could make a contribution and are keen to promote and maintain what you value in our local community, then please contact Becky, our clerk in the first instance. Contact details can be found on the back page of this newsletter.

# Powick Neighbourhood Plan

## **An update from Councillor Maggie Huckfield**

I am pleased to report that significant progress has been achieved over the last few months in the development of our Neighbourhood Plan and we will shortly be presenting the Draft Plan and engaging with the community to receive feedback and suggestions. The Planning Policies are enshrined in law and the Local Planning Authority must acknowledge them to arrive at planning decisions.

I think at this point in the process a brief review of what a Neighbourhood Plan is would be useful as a recap for our followers and an introduction to those who are new in our community.

### **WHAT IS A NEIGHBOURHOOD PLAN?**

It is a document that presents the Planning Policies for our Neighbourhood Area - in this case the Parish of Powick including all the settlements within the parish boundary. The Planning Policies are used to decide whether to approve planning applications.

The Plan was written by us the local community as we know and love our area rather than by the Local Planning Authority Malvern Hills District Council.

Neighbourhood Planning was introduced by the Localism Act in 2011 in order that decision-making be passed to a more local level and it is a powerful tool to ensure development is appropriate, in the best place and is designed in a way that enhances the lives of our community.

The volunteer team of 8 residents make up the Steering Group and we are greatly supported by our Planning Consultant who guides us expertly through the process of analysing the information provided by the Community Survey and using it, along side statutory requirements to put together what is essentially a planning road map for the next 15 years.

# Powick Neighbourhood Plan

## The stages of a Neighbourhood Plan are:

- **Application and designation:** A parish or town council, neighbourhood forum, or community organization applies to the local planning authority to designate a neighbourhood area.
- **Evidence gathering and plan preparation:** The plan is prepared.
- **Public consultation:** The draft plan is subject to public consultation, usually for at least six weeks. This is known as the pre-submission consultation, or Regulation 14 consultation.
- **Formal submission:** The neighbourhood plan is submitted to the council, and the council holds further public consultation. This is known as the submission consultation, or Regulation 16 consultation.
- **Independent examination:** The neighbourhood plan is independently examined by a Planning Inspector.
- **Referendum:** A referendum may be held.
- **Making the neighbourhood development plan:** The neighbourhood development plan is made.

Other activities that may be involved in the process include: Liaising with the local planning authority, Building the evidence base, Setting aims and writing the plan, and Site allocations and Local Green Space designations.

The Planning Policy Team can provide guidance on the process, including potential alternatives and existing policy approaches.

# Powick Neighbourhood Plan

## WHAT STAGES OF OUR NEIGHBOURHOOD PLAN ARE COMPLETE

Application and designation: A parish or town council, neighbourhood forum, or community organization applies to the local planning authority to designate a neighbourhood area.

✓ Done!

Evidence gathering and plan preparation:

✓ Done!



The Plan is prepared, including Powick Design Code and Guidance prepared by our partners AECOM.

✓ Done!

## NEXT STEPS – PUBLIC CONSULTATION

THIS NEXT STAGE IS VERY IMPORTANT AS IT GIVES YOU ALL THE CHANCE TO INFLUENCE THE PROPOSED PLAN BEFORE IT GOES FOR FORMAL SUBMISSION.

This is known as the pre-submission consultation, or Regulation 14 consultation. This is where we circulate the draft plan as widely as possible to the community requesting feedback. In the coming weeks we will engage with as many of you as we can to hear your thoughts and answer any questions.

We will arrange Public Meetings, circulate a flyer to every household detailing where to view the Draft Plan on line. It will be on The Parish Council Website and we will also use Social Media as reminder to check it out.



# Powick Neighbourhood Plan

## AFTER THIS

### ➤ **Formal submission:**

The neighbourhood plan is submitted to the council, and the council holds further public consultation. This is known as the submission consultation, or Regulation 16 consultation.

### ➤ **Independent examinations:**

The neighbourhood plan is independently examined.

### ➤ **Referendum:**

A referendum may be held.

### ➤ **Making the neighbourhood development plan:**

The neighbourhood development plan is made.

This plan has been a long time in the making, made more challenging by Covid appearing in the early stages of planning and we've still a way to go but I'd like to thank everyone who has been involved so far for their attendance and support not to mention good humour when things have been a bit challenging! Also, a thank you to the Newsletters/NP flyers distributors without whom we would be unable to keep you all informed.

Maggie Huckfield  
NDP Lead



# The Pavilion, Hospital Lane



## Regular Weekly Bookings

**Are you looking for a new venue for your weekly class?**

**Hire the Pavilion for £15 per hour.**

**(includes the use of the kitchen, tables, chairs, WiFi, TV and car parking)**

**Bookings now being taken.**

**For more information and to book contact;**

**pavilion@powick-pc.org.uk**



[www.powick-pc.org.uk/the-pavilion](http://www.powick-pc.org.uk/the-pavilion)





# The Pavilion, Hospital Lane

## POWICK PAVILION - A BEACON OF SUSTAINABILITY!

As parishioners will know, Powick Parish Council has heartily embraced the principles of **Sustainability and Renewable Energy** to make a significant local contribution to the Climate Change Agenda.

Nowhere has this commitment been better illustrated than in the construction and operation of the new Powick Pavilion on the Hospital Lane site.

In the article below, former Councillor Colin Phillips, who, with the support of Chairman Andy Lamb, was mainly responsible for the development of the facility, outlines the key features of the Pavilion.

When the Parish Council was discussing the provision of a new sports Pavilion for Hospital Lane, it was very important to all of us that the building should operate in an environmentally friendly way to help reduce our carbon footprint. The Parish Council agreed that as many green features as possible would be used in the new build.

**Firstly**, we wanted to incorporate rainwater harvesting. This involves storing rainwater gathered from the roof in an underground tank and using this water for flushing all of the toilets on site. This can give a tremendous saving on mains water usage and water bills and helps to reduce any surface water flooding.

**Number two** was a method of sustainable heating.

We achieved this with ground source heating which involved laying hundreds of meters of pipework under the ground where the temperature remains fairly constant all year round at between 8c – 12c. The pipework system is filled with a saline solution which is then pumped through a compressor unit, raising the temperature and circulating the heat under the floor of the building.



# The Pavilion, Hospital Lane

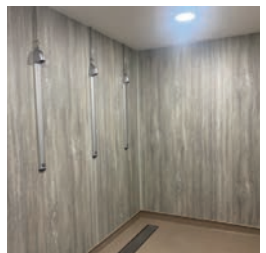
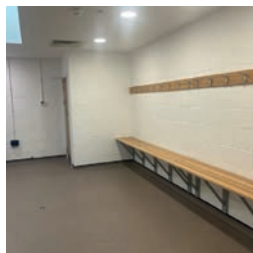
**Number three** was to have solar electricity. We have solar panels on the roof and a battery storage system enabling us to use a lot of the power that we have generated ourselves with any excess going into the grid.

**Number four** is a ventilation and heat recovery system which enables the extraction of warm stale air from the building through a heat exchanger which then warms up the incoming fresh air. This helps to keep our heating costs down whilst also extracting moisture from the shower and changing areas.

**Number five** is the installation of low level solar lighting in the car park area which costs nothing to run. The lighting is low cost to maintain, easy to install, and eco-friendly because it reduces carbon emissions and our reliance on non-renewable energy sources.

Soil left over from excavations will be used for landscaping and to create a cycle track. The surrounding areas will be seeded with wildflower seed and some native tree planting. This will provide food for pollinating insects, wild birds, and bats. This part of the project is ongoing and we hope to complete it this summer.

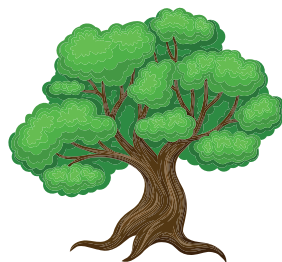
We now have a great community asset for the foreseeable future, not only for sports but for many other recreational uses. We also feel proud to have been able to translate the principles of sustainability into practical actions which have created a totally eco-friendly facility.



# ANCIENT TREE INVENTORY

## Woodland Trust's Inventory of Ancient Trees

The Ancient tree inventory is being developed with the aim of identifying ancient and veteran trees to better recognise what legislation is required to protect our oldest and most significant specimens. PACE members have been submitting information on trees in our Parish and so far 10 trees have been verified and recorded onto the Inventory.



There are specific criteria which trees have to demonstrate to be accepted onto the inventory and measurements of girth and photo evidence is available for the public to view on the web site. Identifying and measuring suitable trees is an ongoing process and there appear to be a large number just waiting to be checked.



If you would like to know more on how to submit information onto the inventory individually or you'd like to join us then **please contact Felicity Williams, 01905 830425**

# ACT ON ENERGY BILLS

## Top Tips

Keeping your home warm and your energy costs low doesn't have to be a challenge. Here are some simple, effective tips from [actonenergy.org.uk](http://actonenergy.org.uk) to help you reduce your energy bills without sacrificing comfort.



Measure	Saving
Turn thermostat down 1 degree	Highest Savings
Dry clothes outside instead of tumble drying	Highest Savings
Better control of heating system	Highest Savings
Apply for the Warm Home Discount	Highest Savings
Apply for Big Difference Scheme with Severn Trent Water	Highest Savings
Power down gadgets/turn off appliances	Average Savings
High efficiency appliances - fridge/freezer/dishwasher	Average Savings
Defrost the freezer	Average Savings
Timer - 4-minute shower	Average Savings
Fully load washing machine	Smaller Savings
Wash at 30 degrees	Smaller Savings
Fully load dishwasher	Smaller Savings



Highest Savings



Average Savings



Smaller Savings

# HOME EFFICIENCY SUPPORT

## What's available?



### **Boiler upgrade scheme in Great Britain**

If you live in England or Wales and want to replace your existing gas, oil or electric boiler with a heat pump or biomass boiler, you could get £7,500 towards the cost of doing so.

[mcs-certified.com](https://mcs-certified.com)

### **Home Upgrade Grant scheme (HUG2)**

Designed to help improve the comfort and energy efficiency of lower income homes in Worcestershire that are not heated by mains gas central heating. The scheme offers several other benefits, including reducing a home's carbon footprint and energy bills, with no cost to the resident.

[worcestershire.gov.uk](https://worcestershire.gov.uk)

### **Act On Energy**

Worcestershire residents can be supported with a wide variety of support. They can help you access funding to help with bill and debt payments and guide you through applying for energy efficiency grants to help keep your home warmer and your bills down. Their Community Outreach Officers can even help with home visits and a range of small measure installations.

[actonenergy.org.uk/area/worcestershire](https://actonenergy.org.uk/area/worcestershire)

FREE  
HEALTHY  
FUN



# TRY OUT AN E-BIKE

Free two-week loan of  
a quality electric bike  
for residents of  
Powick Parish!

Email for details:  
[ebike@powickclimateaction.org](mailto:ebike@powickclimateaction.org)





The Pavilion, Hospital Lane



# Children's Party Bookings

**Book your next childrens party at the  
Pavilion at an hourly rate of £15.  
(Typical party booking 3 hours £45)**

**Bookings now being taken**

**For more information and to book  
contact;  
[pavilion@powick-pc.org.uk](mailto:pavilion@powick-pc.org.uk)**



[www.powick-pc.org.uk/the-pavilion](http://www.powick-pc.org.uk/the-pavilion)



# Callow End Playing Fields

## A new replacement hedge at Callow End Playing Field

Work to prepare the site for the new hedge continued throughout the summer and autumn of 2024. Many of the large trees planted in the grass verge, needed lower branches removed to allow light and air to the new hedge site. This improved the profile of the trees and dead wood was removed. Large areas of bramble and scrub were cut back to the fence with the effect of increasing the width of the verge and the overgrown grass edges were trimmed.

All of the branches and scrub was formed into a log pile which will become a welcome habitat for small mammals, insects and reptiles as it rots down. At the start of November we took delivery of 420 mixed species saplings, donated to us by The Woodland Trust. The plants will grow to be a colourful, wildlife friendly hedge offering food for pollinators and birds.



A small team of PACE and Callow End Playing Field Association members marked out and planted the saplings using biodegradable plant guards which, will in time, decompose into the soil. A thick layer of mulch was applied to suppress weeds and help retain moisture. The young hedge will need maintenance over the next few years (mainly removing any challenging weeds and replenishing mulch as needed). We will welcome any offers of assistance in helping with this activity.

# Callow End Playing Fields

## Over to YOU!

Over the last 17 years the Callow End Playing Fields Committee has maintained the Callow End playing fields and its pavilion. We have improved the facilities for children, families, walkers, bikers, and everyone who uses the facilities.

We raised over £50,000, all of which went on adding new facilities, maintenance and repair. We provide the local voice and drive necessary to make a success of such a great community asset.

It has been enjoyable and fulfilling, from gathering at the pub to organising village activities. This includes fundraising events held in the playing fields, the two Burns Nights at Stanbrook Abbey, and other events we arrange, such as the Christmas lights switch-on.

The Committee has enjoyed it! But, we have reached the stage where we want to stand down in March and have a new, fresher Committee take over, with new officers. We are all happy to carry on helping the new committee.



## Good News!

Following a recent meeting, volunteers have agreed to form a 'User Forum' made up of current users of the field who will oversee the day to day running of the Playing Field whilst liaising with the Parish Council



For more info, please contact Ollie on [oliver.parker@jcsys.co.uk](mailto:oliver.parker@jcsys.co.uk) OR Roy on [roy@courtproperty.co.uk](mailto:roy@courtproperty.co.uk)

# Safer Neighbourhood Partnership



**Coming soon; keep this date free!**

Friday 21st March 2025 7.00 pm til 8.00 pm at Hospital Lane Playing Field Pavilion.

Powick Parish Council is pleased to host a Safer Neighbourhood Partnership Surgery at the Hospital Lane Playing Field Pavilion. This is an informal drop-in session where a member of the SNP team will be on hand to listen and give advice.

The purpose of a Safer Neighbourhood Surgery is for residents to let the Partnership Team know about any local issues or crimes happening around the local area. The team will be happy to share advice on security opportunities.

The evening is not about reporting crimes; non-urgent crimes should be reported through West Mercia Police website; it's a really easy process.

**Always, in the event of an emergency dial 999.**

Everyone is welcome to drop in and we do urge you to support this service as a positive response will ensure we can host similar surgeries in the future.

There has been a recent spate of crime in our parish and surrounding villages so a timely reminder about tightening up on home security was circulated on our local social media sites recently.

# Safer Neighbourhood Partnership

## Home security



### Popping out of the house?

- Close and lock all your doors and windows, even if you're only going out for a few minutes!
- Double-lock any door
- Make sure that any valuables are out of sight – this includes leaving packaging from outside of your house
- Keep handbags away from the letterbox or cat flap and hide all keys including car keys, as a thief could hook keys or valuables through even a small opening
- Never leave car documents or ID in obvious places such as kitchens or hallways
- In the evening, shut the curtains and leave lights on
- If you're out all day, then it's advisable to use a timer device to automatically turn lights and a radio on at night
- Set your burglar alarm
- Make sure the side gate is locked
- Lock your shed or garage
- Lock your bike inside a secure shed or garage, ideally bolted to the ground or wall, like a ground anchor

### Going away?

- If you're off on holiday and wish to post anything on social media, make sure your posts aren't public and that they're only seen by your friends – you don't want potential burglars to know your house will be unattended!
- Leave lights and a radio on a timer to make your house appear occupied
- Ask a trusted neighbour to keep an eye on your property, or you could join a Neighbourhood Watch Scheme to keep in touch with those in your street
- Consider asking your neighbours to close curtains after dark
- If your driveway will be empty – you could also ask a neighbour to park on there to deter burglars from breaking in
- Remember to cancel newspaper and milk deliveries – you don't want these piling up on your doorstep!





# Reporting Issues in our Parish

Everyone in the Parish can report an issue to the council. It's simple to do, you just need to go to the relevant website and complete the required form;

## Malvern Hills District Council

► [tinyurl.com/MHDCReport](https://tinyurl.com/MHDCReport)

- Abandoned Vehicles
- Fly Tipping
- Dead Animal - removal
- Litter and Street Cleaning
- Dog Bins
- Dog Fouling
- Graffiti
- Report a missed bin
- Road sweeping
- Street Name Plates - damaged or missing
- Gritting, ice and snow

## Worcestershire County Council

► [tinyurl.com/WorcsCCReport](https://tinyurl.com/WorcsCCReport)

- Drainage and flooding
- Bridges and structures
- Car parks and parking
- Grit bins and routes
- Spillage on the highway
- Road and Footway issues
- Fallen trees
- Potholes and damage to the road and pavements
- Public rights of way
- Street Lighting
- Traffic Lights



# Demand Responsive Minibus

The Demand Responsive Minibus service has been performing very well and has now been extended to include Powick. Local residents can book a ride using the mobile phone app.

**Worcestershire veterans can now enjoy free travel** on the Worcestershire on Demand bus services. If not eligible for free travel, the fare is £2.50 per journey, while those with concessionary bus passes can travel free of charge.

Worcestershire is home to over 22,000 veterans, and this initiative honors their sacrifices and dedication by recognizing their service to the nation.

An increasing number of people are using this popular service, which provides a sustainable and efficient mode of travel.

The buses operate from 7am to 7pm, Monday to Saturday. You can request a journey through the app and will be directed to a nearby "virtual bus stop" for pick-up and drop-off, ensuring quick and efficient shared trips..



Visit [tinyurl.com/Powick-Demand-Responsive-Bus](https://tinyurl.com/Powick-Demand-Responsive-Bus) for more information.



## Poppy Appeal



To all craft groups and individuals creating poppies for a cascade at the church, to commemorate the anniversary of the end of the Second World War: Please contact Christine Harfoot (Maley) at 01905830508/ 0797437849, or Krys Lamb at 01905830737/ 07977554082. Let us know how many poppies you (or your group) have made so far.

This will help us determine how many more are needed. Thank you!

# Farewell to Cllr Sam Underwood

## Bimbling by Bike

After fifteen happy years as a resident of Callow End, and nearly fourteen as a parish Councillor for Powick, I am leaving the village to go and travel the world with my partner Beck; by bike!

As we don't have a car, the chances are you'll have seen us riding around the area. Whether on Beck's commute to Malvern, doing some shopping, or helping with one of the Bike Buses in Worcester, we're out there all year round, pedalling away.

We've long dreamt of just carrying on pedalling and after several cycle touring holidays we decided to go for it. There's still plenty to sort, as we are going the whole hog. Giving away most of our possessions and selling our house. Scary but exciting too!

I just wanted to reflect on my time as a councillor, as I have found it very rewarding. At 35, I was youngish for a parish councillor when I started. I can understand why some people may think it's not for them. It took me a while to realise how important a role it is in providing a direct link to the community, through people on the ground who value the place and people they serve. When I leave, Callow End will only have one parish councillor. I'd encourage anyone interested to get involved!



Follow our journey (from early Summer-ish) here: [www.bimblingbybike.com](http://www.bimblingbybike.com)

Oh and, thanks to my fellow councillors for your support and hard work.

# Meet your Councillors

**Andrew Lamb**

Chairman of the Parish Council

[alamb@powick-pc.org.uk](mailto:alamb@powick-pc.org.uk)

**Stephen Williams**

Parish Councillor

Parish Paths Warden

Parish Tree Warden

[swilliams@powick-pc.org.uk](mailto:swilliams@powick-pc.org.uk)

**Felicity Williams**

Parish Councillor

[fwilliams@powick-pc.org.uk](mailto:fwilliams@powick-pc.org.uk)

**John Foy**

Parish Councillor

[jfoy@powick-pc.org.uk](mailto:jfoy@powick-pc.org.uk)

**Suzanne Mealings**

Parish Councillor

[smealings@powick-pc.org.uk](mailto:smealings@powick-pc.org.uk)

**Kerrie Thomas**

Parish Councillor

[kthomas@powick-pc.org.uk](mailto:kthomas@powick-pc.org.uk)

**Robert Willetts**

Parish Councillor

[rwilletts@powick-pc.org.uk](mailto:rwilletts@powick-pc.org.uk)

**Maggie Huckfield**

Vice Chair of the Parish Council

Chair of the Planning Committee

NDP Lead

[mhuckfield@powick-pc.org.uk](mailto:mhuckfield@powick-pc.org.uk)

**Jason Stanton**

Parish Councillor

Chair (joint) of Powick Action on  
Climate Change (PACE)

[jstanton@powick-pc.org.uk](mailto:jstanton@powick-pc.org.uk)

**Sam Underwood**

Parish Councillor

Chair (joint) of Powick Action on  
Climate Change (PACE)

[sunderwood@powick-pc.org.uk](mailto:sunderwood@powick-pc.org.uk)



**GET IN  
TOUCH**  
powick-pc.org.uk

tinyurl.com/BookPowick



BOOK PAVILLION

**Clerk to the Parish Council: Becky Bowser**

2 Newlands Cottage, Billesley Lane, Alvechurch, B48 7HE

Mobile: 07887 536 934

Email: clerk@powick-pc.org.uk

**Chairman of the Parish Council: Andy Lamb**

9 Old Rectory Close, Powick WR2 4QU

Tel: 01905 830737 or Mobile: 07973 679774

Email: alamb@powick-pc.org.uk

**Parish Council Meetings**

First Weds of each month, excluding August (no meeting)

Planning Committee Meetings start at 7.00pm

Parish Council meetings start at 7.30pm



Find us on  
facebook

**@powickparishcouncil**

**District and County Councillor: Tom Wells**

01905 831752 | talwells@btinternet.com

**District Councillor: Kathy Wells**

01905 831752 | katherine.wells@malvernhillssdc.net